

Rail Central: Community update

Summer 2016

Consultation on the proposed Rail Central project is well underway and there is still plenty of time for local residents and others with an interest to view the initial plans and give their feedback ahead of the Phase One deadline of 30 September. You can find further information on how to do this in this leaflet.

Ashfield Land and its project team is carrying out further surveys and discussions on the technical elements of the project – such as highways and the environment – to help inform the development of the plans. We have provided some updates in this leaflet.

Rail Central is a proposal for a major new logistics and distribution hub – the proposed site is where the West Coast Main Line meets the Northampton Loop Line alongside the A43 and near the M1. It is a strategic location in the heart of the UK selected because of its connectivity to major rail and road transport infrastructure. Rail Central is classified as a Nationally Significant Infrastructure Project (NSIP) under the Planning Act 2008.

Public consultation: get involved

On 28 April 2016, we launched our first phase of formal community consultation with a series of public exhibitions in the local area. Approximately 1,000 local residents and other interested parties attended across the eight days of public exhibitions, held in Blisworth, Milton Malsor, Roade, Collingtree and Towcester.

Consultation is being carried out in line with an agreed Statement of Community Consultation (SoCC) which was confirmed with the local authorities at the outset and explains how the consultation will be undertaken.



There is still time to view the proposals and give your feedback

All consultation materials are available to view on the project website (www.railcentral.com) and at a series of inspection locations in the local area (please see overleaf for more information). You can give us your feedback using one of the feedback forms, sending an email or sending a letter to our freepost address.

Feedback received in this first phase of consultation will help to inform the development of the designs and final application for the project to be submitted to the Planning Inspectorate. We want to make Rail Central the best it can be and our aim is to work closely with local communities and other stakeholders as we progress our proposals.

**Please give all feedback by
30 September 2016**

It is anticipated that further public consultation (Phase Two) will take place on updated and more detailed plans in early 2017. These updated plans will be informed by feedback we receive at this stage, along with other environmental and technical considerations.

Consultation snapshot

Following the start of the formal community consultation in April, we are actively engaging with a wide range of stakeholders and benefiting from feedback.

- 8 x local public exhibitions held during April and May attended by approximately 1,000 people
- Local Liaison Group (LLG) established as a forum for coordinating and sharing information – next full meeting scheduled for September
- Increasing dialogue with local schools and colleges
- Ongoing engagement with business groups including Semlep, NEP and Towcester Business Club
- Regular community updates – this leaflet is the third in the series starting in January 2016

In line with our SoCC and the NSIP process, we are focused on carrying out a comprehensive pre-application consultation.

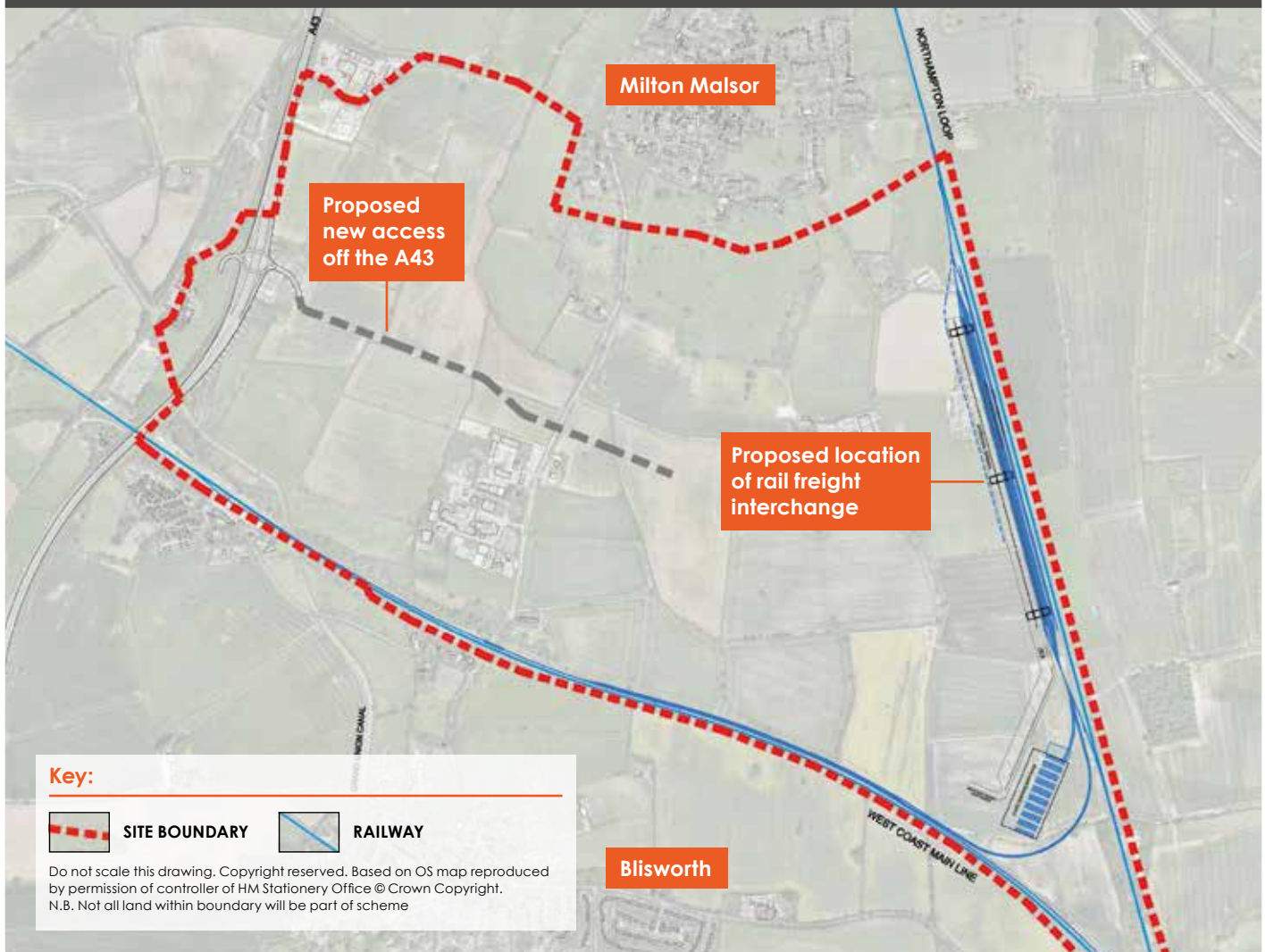
Detailed discussions are continuing with technical stakeholders – from the local authorities to organisations including Network Rail and Highways England – and these will feed into the consultation as it moves forward throughout 2016 and into 2017.

See page 3 for updates on specific areas of technical work.

Spotlight on: UK rail infrastructure

- Rail is more sustainable and efficient than road transport for moving large volumes of freight
- The government and businesses would like to see more use of rail transport for moving freight
- Strategic Rail Freight Interchanges (SRFI) create opportunities to shift long-distance freight from road onto rail, by bringing large amounts of warehousing alongside the rail network
- There are currently only six operational SRFI - more SRFI could then facilitate more movement of goods by rail, to and from ports and mainland Europe as well as between SRFI
- The existing SRFI only have finite capacity and do not exist in sufficient numbers to create a national network of interconnected sites
- Rail Central would be the only SRFI capable of accessing two separate rail lines from the same facility (ie the West Coast Main Line and the Northampton Loop Line)

Fig 1: Indicative site context showing strategic infrastructure and key connections to rail and road



Project updates

Highways, access and transport

How vehicles will arrive at and leave the site – as well as the wider questions of related potential impacts on the local highway network – were some of the most frequently asked questions during the public exhibitions and through feedback submitted to date.

Our transport team has been working closely with Northamptonshire County Council (NCC) and Highways England (HE) to model and understand the relationship between the network as it operates now and the network as it would operate if Rail Central is built and operational. This highways modelling is a fundamental aspect of the DCO.

We have been engaging with NCC and HE over how the traffic data is modelled and analysed. It is anticipated this process will be complete before the end of the year and the result will enable us to identify what mitigation or engineering solutions (eg for new or improved junctions etc) are needed to ensure appropriate traffic flows to and from the site. The proposals will be presented to the public at the next round of public consultation (planned for early 2017) and there will be an opportunity to give feedback on this.

Masterplanning and design

Many residents who attended the public exhibition were interested to find out how the scheme would look: how the buildings would be arranged, their scale and design.

In April we published for consultation a draft illustrative masterplan which indicated the proposed parameters of the development and extent of the site. We are developing this plan to provide further information about the parameters of the project and to incorporate results from ongoing assessments being carried out in relation to the project.

We intend to publish this updated plan for consultation during August 2016

In addition, we are using the proposed parameters to develop a set of **visualisations** for public consultation. These will provide some additional visual context to the proposed development and are also scheduled to be **published for consultation during August 2016.**

Supplementary consultation – August 2016

As referenced in this newsletter, Rail Central will shortly be publishing an updated illustrative draft masterplan and visualisations based on these parameters plans. It is anticipated these will be published on our project website (www.railcentral.com) during August 2016. We will be inviting feedback on these materials as part of the ongoing Phase One Consultation.

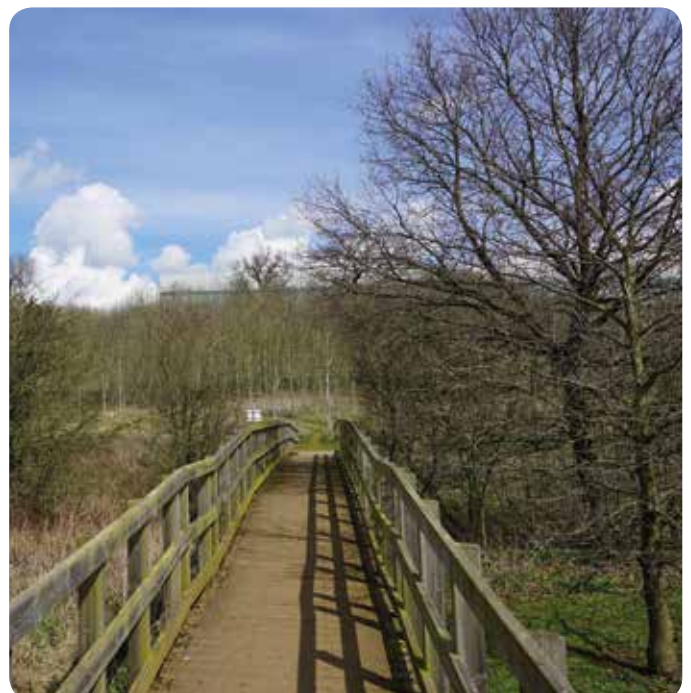
Please register on our website or visit our website during August / September for further information and to give feedback on these materials. These visualisations will also be available to view (via CD) at the deposit locations – see listed on page 4



Landscaping and footpaths

Progress is also continuing with respect to landscaping and we anticipate further information becoming available over the coming months.

On **footpaths**, we have assessed the various routes and established the clear objectives of keeping existing footpaths open and retaining existing links, seeking opportunities for introducing green space, bunding and planting, and looking for ways of improving existing connections between villages. This work is ongoing and we are planning to present it to the public for consultation early next year.



How to find out more

All relevant documents, plans and maps for consultation will be available to view and download from the project website, www.railcentral.com until the end of the consultation period on 30 September 2016.

If you cannot view the information and plans online they will be available digitally at the locations below. Please note these opening hours were provided by the venue and are subject to change at the discretion of the venue. Visitors are advised to confirm opening times directly with the venue when planning to visit:

LOCATION	ADDRESS	OPENING TIMES
Northamptonshire County Council	County Hall, Northampton NN1 1ED	Monday – Friday: 8am – 5.30pm
Northampton Borough Council Offices	The One Stop Shop, The Guildhall, St Giles Square, Northampton NN1 1DE	Monday – Friday: 10am – 4pm
Northamptonshire Central Library	Northamptonshire Central Library, Abington Street, Northampton NN1 2BA	Monday – Friday: 9am – 6pm; Saturday: 9am – 5pm; Sunday: 11am – 4pm
Roads Library	Roads Library, High Street, Roades NN7 2NW	Wednesday – Friday: 2pm – 6pm; Saturday: 10am – 2pm; Sunday: 1pm – 4pm
Towcester Library	Towcester Library, The Forum, Moat Lane, Towcester NN12 6AD	Monday – Friday: 9am – 6pm; Saturday: 9am – 5pm; Sunday: 1pm – 4pm

Providing feedback

Any feedback that is intended to influence the proposals will need to be provided in writing.

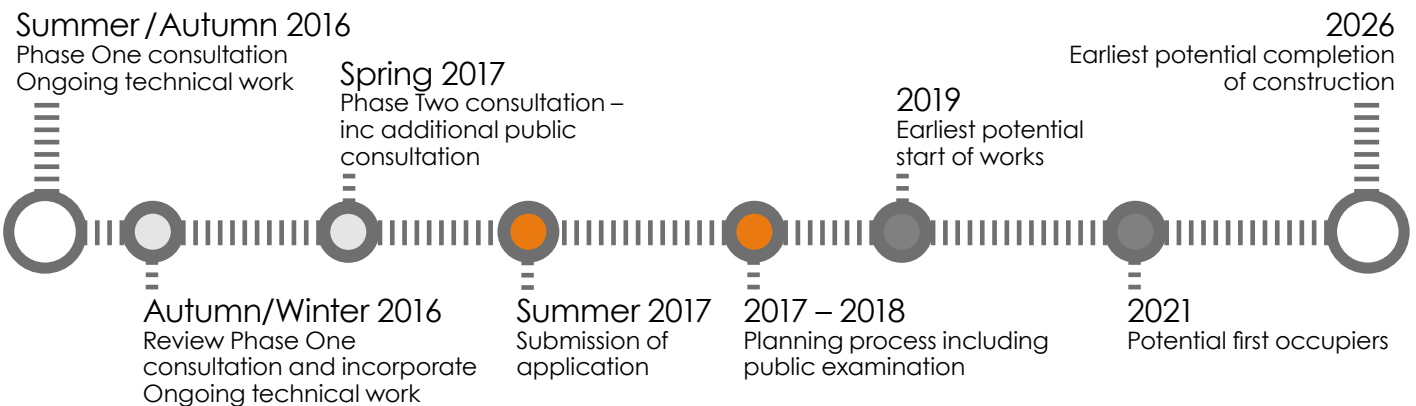
This feedback will be recorded within the Consultation Report that will form part of the application submitted to the Planning Inspectorate. We have established a number of ways to help ensure local communities and other interested parties can provide feedbacks:

- **Project website:** the project website (www.railcentral.com) includes the latest project information, updates and core documents as detailed above. An online feedback system is available on the website.
- **Project email address:** the project email address (railcentral@camargue.uk) can be used to request further information, ask questions or submit feedback.

- **Freepost:** the dedicated project freepost address (Freepost Rail Central) can be used to request further information, ask questions or submit feedback.
- **Project telephone line:** the project telephone line can be used for general enquiries relating to the consultation. Local residents and other interested parties can request information by the project telephone line. It is not possible to provide feedback by telephone. If respondents cannot provide written feedback, we are happy to discuss, on an individual basis, alternative ways for recording feedback.

Please note comments may be made public and the personal details of respondents may be made available to the Planning Inspectorate and other third parties. The deadline for receiving all feedback during Phase One of the consultation is **Friday 30 September 2016**.

What happens next?



Contact us



www.railcentral.com



railcentral@camargue.uk



0845 543 8967 Monday to Friday, 9am to 5.30pm
(please note calls are charged at local rates)



FREEPOST Rail Central

There is further information on the planning process on the National Infrastructure Planning website at: www.infrastructure.planninginspectorate.gov.uk