

Rail Central: Community consultation



This leaflet is an introduction to Rail Central's community consultation which is now formally starting (from 28 April 2016).

Here you can find out more about our programme of community consultation as well as information on our public exhibitions and details on how to get involved and provide your views and feedback.

Rail Central is a proposal for a major new logistics and distribution hub – the proposed site is where the West Coast Mainline meets the Northampton Loop Line alongside the A43 and near the M1. It is a strategic location in the heart of the UK selected because of its connectivity to major rail and road transport infrastructure.

The project is being brought forward by Ashfield Land, an experienced property development company with a strong track record.



Over the last few months, we have been consulting with local MPs, local councillors, parish councils, stakeholders and representatives to introduce the scheme, explain how it could work and outline the draft proposals.

GET INVOLVED

We are now inviting the local community to take part in the formal consultation process so that people can find out more about the project, view the plans, input to the proposals, and register comments and opinions. Feedback received will help to inform the project application which will be submitted for a Development Consent Order (DCO).

The planning and consultation process will help to balance national need with local impact. We want to make Rail Central the best it can be and our aim is to work closely with local communities and other stakeholders as we progress our proposals.

Rail Central is classified as a Nationally Significant Infrastructure Project (NSIP) under the Planning Act 2008. Therefore all comments, views and feedback from the local community and a wide range of other stakeholders will be considered. We will have regard to all submitted feedback in how we prepare our application for a DCO.

Around this time next year, we intend to submit our proposals to the Planning Inspectorate, the government body responsible for handling applications for NSIPs. The Planning Inspectorate will examine the proposals and make a recommendation to the Secretary of State who will make the final decision.



Project overview

Rail Central is a proposed new strategic rail freight interchange in Northamptonshire.

The site is located where the West Coast Mainline meets the Northampton Loop Line to the south west of Northampton and between the villages of Blisworth and Milton Malsor.

A Strategic Rail Freight Interchange (SRFI) is a freight interchange and logistics hub which is linked to both rail and road.

It includes specialist buildings and sophisticated facilities and equipment for handling goods, typically arriving in containers.

The purpose of a SRFI is to maximise efficiency and sustainability in how goods are moved from the point of supply to the point of demand. A typical SRFI has warehouses which are either connected directly to rail lines or where there is an inter-modal facility available for use by occupiers of the site to handle freight containers.

The overall benefit of both types of connection is that these buildings facilitate and encourage the use of rail in line with Government policy.

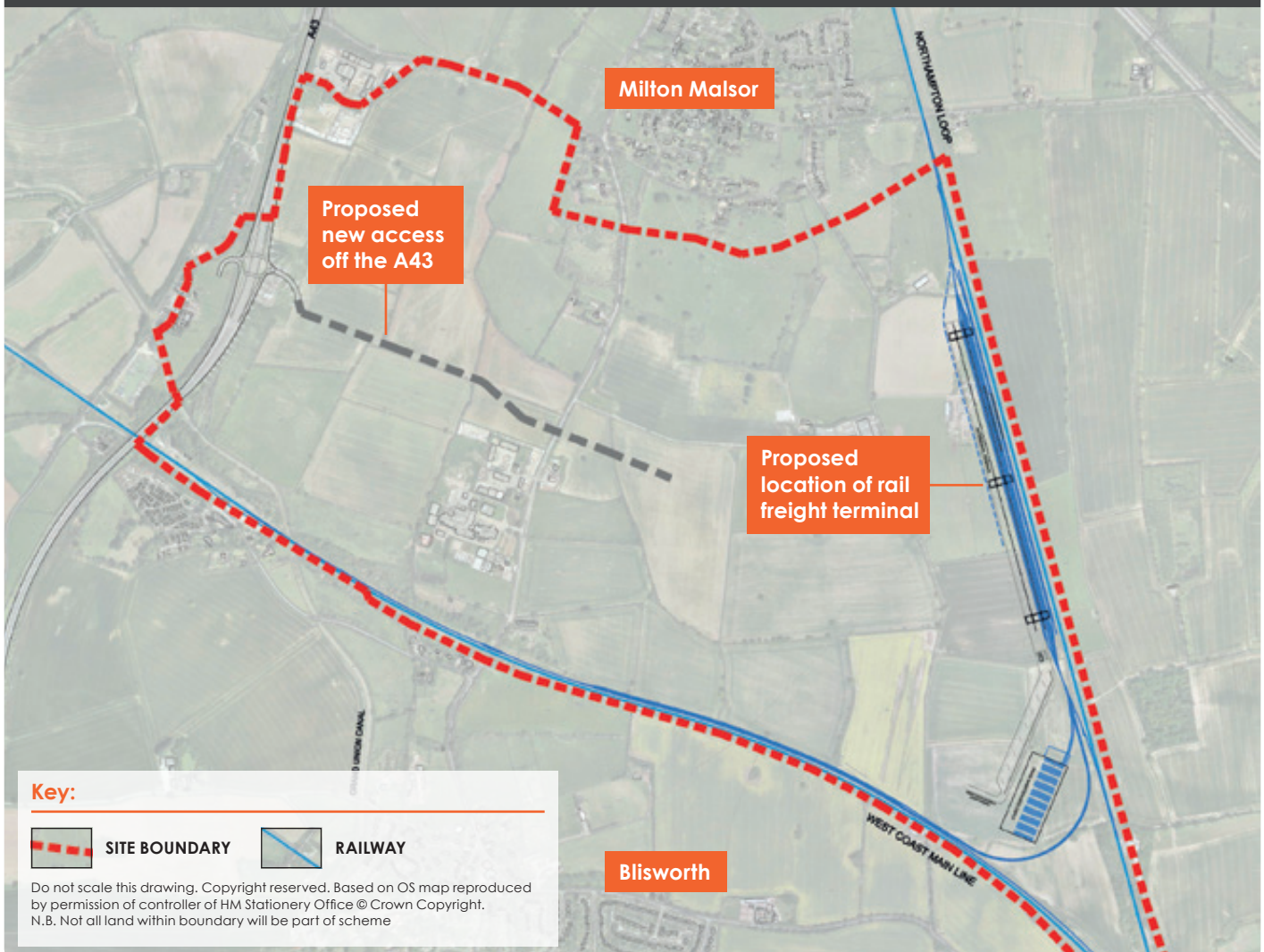
As well as meeting national policy and demand from businesses looking for the best supply chains, SRFIs contribute to environmental objectives by reducing



the overall amount of freight road miles and reducing CO₂ emissions (moving freight by rail compared to road creates significantly fewer emissions per tonne of freight moved).

In addition to the main SRFI site, improvement to the highways network may also be required outside of the site boundary shown below. Further details will be consulted on in due course.

Fig 1: Indicative site context showing strategic infrastructure and key connections to rail and road



Consultation

Starting this April, we will be asking the local community and other interested parties for views and comments on the proposals so we can make them the best that they can be.

This consultation programme has been developed in discussion with Northampton Borough Council, Northamptonshire County Council and South Northamptonshire Council. The project is subject to an Environmental Impact Assessment, which means that an environmental statement will be prepared setting out whether the project is likely to have significant environmental effects. We are now consulting on our draft plans, along with the Preliminary Environmental Information (PEI) Report which explains our approach to assessing the environmental effects of the project.

Consultation and feedback are central to the planning process for NSIPs.

We will therefore be working hard to ensure that anyone wanting to participate in the consultation has the opportunity to do so.

The views of local residents and stakeholders are being sought and all feedback will be considered.



Feedback from the consultation will contribute to the preparation of a Consultation Report which will be submitted with the application for a DCO.

The NSIP planning process is specifically designed to ensure local involvement and that local communities and stakeholders have a voice.

More information on this process is available at the Planning Inspectorate website:

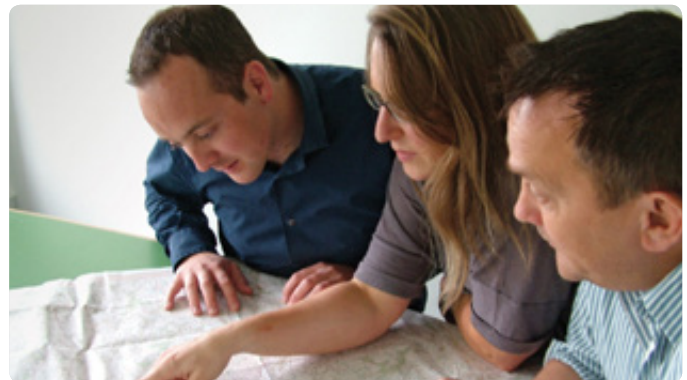
<http://infrastructure.planninginspectorate.gov.uk>

Public exhibitions

From this April, we will be holding a number of public exhibitions so that people can find out more, view the plans, and register comments and opinions. Information will also be available on our website and at specified locations in the local area.

At the exhibitions, members of the project team will be available to answer questions and explain the proposals. Questions can also be asked via email and post.

The dates for the exhibitions are:



VENUE	ADDRESS	DATE	TIME
Walnut Tree Inn	21 Station Road, Blisworth NN7 3DS	Thursday 28 April 2016	12pm–8pm
Walnut Tree Inn	21 Station Road, Blisworth NN7 3DS	Friday 6 May 2016	12pm–8pm
Blisworth Village Hall	19 Stoke Road, Blisworth NN7 3DB	Saturday 7 May 2016	11am–4pm
Roade Village Hall	Bailey Brooks Lane, Roade NN7 2LT	Friday 13 May 2016	11am–5pm
Collingtree Village Hall	The High Street, Collingtree NN4 0NQ	Saturday 14 May 2016	11am–4pm
Towcester Town Hall	The Town Hall, 86 Watling Street, Towcester, NN12 6BS	Wednesday 18 May 2016	12pm–8pm
Milton Malsor Village Hall	High Street, Milton Malsor, NN7 3AS	Friday 20 May 2016	12pm–8pm
Blisworth Village Hall	19 Stoke Road, Blisworth NN7 3DB	Saturday 21 May 2016	11am–4pm

Providing feedback

Any feedback that is intended to influence the proposals will need to be provided in writing.

This feedback will be recorded within the Consultation Report that will form part of the application submitted to the Planning Inspectorate.

We have established a number of ways to help ensure local communities and other interested parties can provide feedback. This includes:

- **Project website:** the project website (www.railcentral.com) includes the latest project information, updates and core documents as detailed above. An online feedback system is available on the website.
- **Project email address:** the project email address (railcentral@camargue.uk) can be used to request further information, ask questions or submit feedback.
- **Freepost:** the dedicated project freepost address (Freepost Rail Central) can be used to request further information, ask questions or submit feedback.

- **Project telephone line:** the project telephone line (0845 543 8967) can be used for general enquiries relating to the consultation. Local residents and other interested parties can request information by telephoning the project telephone line. However, it is not possible to provide feedback by telephone.

If respondents cannot provide written feedback, we are happy to discuss, on an individual basis, alternative ways for recording feedback.

Please note comments may be made public and the personal details of respondents may be made available to the Planning Inspectorate and other third parties.

The deadline for receiving all feedback during this phase of the consultation is **Friday 30 September 2016**. Any feedback received after this date may not be considered.

All feedback provided during the consultation will be considered. The Consultation Report will detail the consultation carried out, summarise the feedback received and demonstrate how Ashfield Land has had regard to feedback.

What if I cannot attend an exhibition?

All relevant documents, plans and maps for consultation will be available to view and download from the project website, www.railcentral.com from 28 April until the end of the consultation period on 30 September 2016.



If you cannot view the information and plans online they will be available digitally at the locations below. Please note these opening hours were provided by the venue and are subject to change at the discretion of the venue. Visitors are advised to confirm opening times directly with the venue when planning to visit:

LOCATION	ADDRESS	OPENING TIMES
Northamptonshire County Council	County Hall, Northampton NN1 1ED	Monday – Friday: 8am – 5.30pm
Northampton Borough Council Offices	The One Stop Shop, The Guildhall, St Giles Square, Northampton NN1 1DE	Monday – Friday: 10am – 4pm
Northamptonshire Central Library	Northamptonshire Central Library, Abington Street, Northampton NN1 2BA	Monday – Friday: 9am – 6pm; Saturday: 9am – 5pm; Sunday: 11am – 4pm
Road Library	Road Library, High Street, Road NN7 2NW	Wednesday – Friday: 2pm – 6pm; Saturday: 10am – 2pm; Sunday: 1pm – 4pm
Towcester Library	Towcester Library, The Forum, Moat Lane, Towcester NN12 6AD	Monday – Friday: 9am – 6pm; Saturday: 9am – 5pm; Sunday: 1pm – 4pm

Contact us



www.railcentral.com



0845 543 8967 Monday to Friday, 9am to 5.30pm
(please note calls are charged at local rates)



railcentral@camargue.uk



FREEPOST Rail Central

There is further information on the planning process on the National Infrastructure Planning website at: www.infrastructure.planninginspectorate.gov.uk